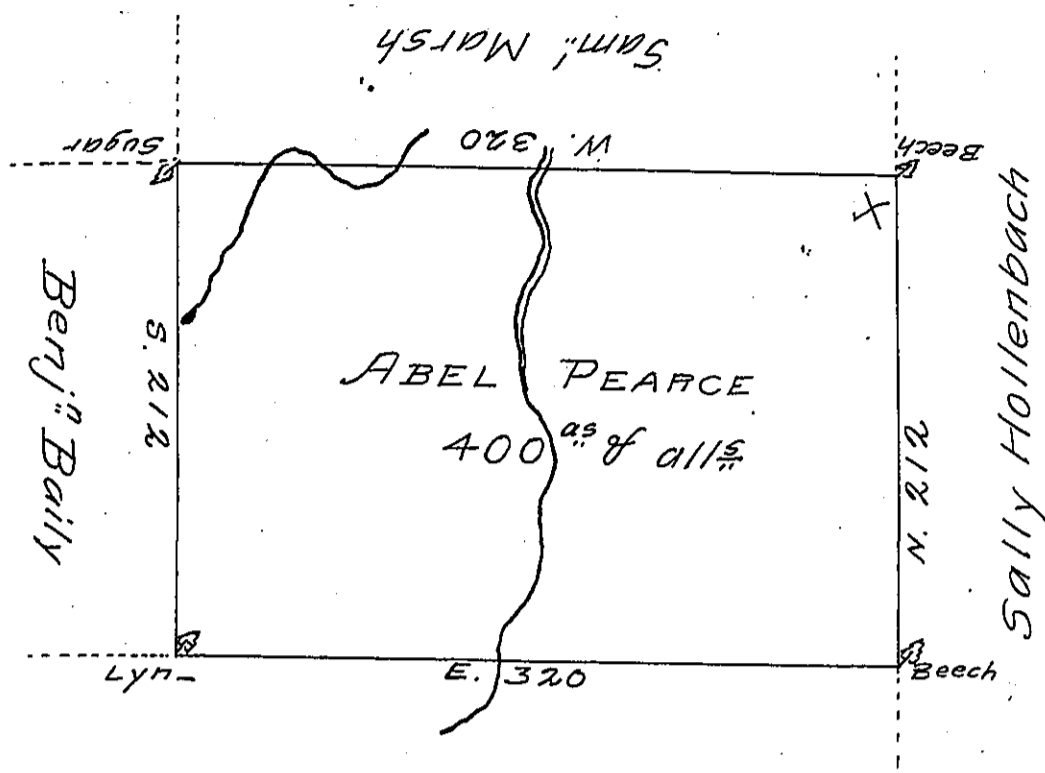


C-127-195



By Virtue of a Warr: dated 20th August 1792. Surveyed
 the 8th of August 1793 unto Abel Pearce the above
 described Tract of Four hundred acres of Land & usual
 allowance. Situated on a branch of Sugar Creek in
 Luzerne County

By W^m Montgomery D. S

To Daniel Brodhead Esq^r

Surv^t Gener^l of Pensylv^a

Jo: J. Wallis D.S.

IN TESTIMONY that the above is a copy of the original remaining on file in
 the Department of Internal Affairs of Pennsylvania, made
 conformably to an Act of Assembly approved the 16th day of
 February, 1833, I have hereunto set my Hand and caused
 the Seal of said Department to be affixed at Harrisburg,
 this twenty-fourth day of July 1906

Isaac S. Brown
 Secretary of Internal Affairs.